

---

**From:** Lane, Cliff (NIH/NIAID) [E] [/O=EXCHANGELABS/OU=EXCHANGE ADMINISTRATIVE GROUP (FYDIBOHF23SPDLT)/CN=RECIPIENTS/CN=2D7E368A3137473BBCE161547A82F2DE-CLANE]  
**Sent:** 1/29/2020 4:05:06 PM  
**To:** McNay, Laura (NIH/NIAID) [E] [/o=ExchangeLabs/ou=Exchange Administrative Group (FYDIBOHF23SPDLT)/cn=Recipients/cn=d089e838a3824b60b91b6c394fedd335-lmcnay]  
**Subject:** I will meet you there.

---

**From:** McNay, Laura (NIH/NIAID) [E] (b)(6)  
**Sent:** Wednesday, January 29, 2020 10:57 AM  
**To:** Lane, Cliff (NIH/NIAID) [E] (b)(6)  
**Subject:** Re: 4Ls

5705 Industry Lane. Right off the 85 Frederick exit.

Laura

On Jan 29, 2020, at 10:31 AM, Lane, Cliff (NIH/NIAID) [E] (b)(6) wrote:

I would hope to be there before the end of the 3 PM call. What is the address?

---

**From:** McNay, Laura (NIH/NIAID) [E] (b)(6)  
**Sent:** Wednesday, January 29, 2020 10:28 AM  
**To:** Lane, Cliff (NIH/NIAID) [E] (b)(6)  
**Subject:** Re: 4Ls

Yes but I don't want you to go out of your way. Let's decide after 3pm call?

Laura

On Jan 29, 2020, at 10:20 AM, Lane, Cliff (NIH/NIAID) [E] (b)(6) wrote:

My first meeting at IRF is at 4. Is Industry Lane on the way to IRF? If so, I can stop by on my way.

---

**From:** McNay, Laura (NIH/NIAID) [E] (b)(6)  
**Sent:** Wednesday, January 29, 2020 10:18 AM  
**To:** Lane, Cliff (NIH/NIAID) [E] (b)(6)  
**Subject:** Re: 4Ls

Ok I didn't mind because I was meeting with Leidos at industry lane. Want me to check with Trea in a time or just pop over to IRF? Completely up to you. I'm good either way.

Laura

On Jan 29, 2020, at 10:15 AM, Lane, Cliff (NIH/NIAID) [E] (b)(6) wrote:

Still no need to travel to Frederick. Let's try to do it by phone tomorrow before you leave.

---

**From:** McNay, Laura (NIH/NIAID) [E] (b)(6)  
**Sent:** Wednesday, January 29, 2020 10:12 AM  
**To:** Lane, Cliff (NIH/NIAID) [E] (b)(6)  
**Subject:** Re: 4Ls

I go to Liberia tomorrow. I think I was the problem!

Laura

On Jan 29, 2020, at 10:07 AM, Lane, Cliff (NIH/NIAID) [E] (b)(6) wrote:

You don't need to go to the IRF for your PMAP if that is why you are going there. We can do it in Bethesda on Thursday or Friday. If I asked this of you I might have had a wire crossed with an email from Connie.

On Jan 29, 2020, at 4:01 PM, McNay, Laura (NIH/NIAID) [E] (b)(6) wrote:

No problem. Are we still meeting at 430 at the IRF for my pmap or is something else more convenient for you?

Laura

On Jan 29, 2020, at 9:03 AM, Lane, Cliff (NIH/NIAID) [E] (b)(6) wrote:

It looks like 3 is best. I am due to land at 2:07 and should be

able to get on the  
phone by 3. It should  
not take long.

Thanks to everyone  
for being available on  
short notice.

On Jan 29, 2020, at  
2:05 PM, Hensley,  
Lisa (NIH/NIAID)

[E]

(b)(6)

All.

Just let  
me  
know  
what  
time  
works  
for  
everyo  
ne

Lisa

Sent  
from  
my  
iPhone

On Jan  
29,  
2020,  
at 7:30  
AM,  
Higgs,  
Elizabe  
th  
(NIH/  
NIAID  
) [E]

(b)(6)

wrote:

A  
s  
c  
a  
n  
l  
.

**F  
r  
o  
m  
:  
"**

(b)(6)

(b)(6)

**D  
a  
t  
e  
:  
W  
e  
d  
n  
e  
s  
d  
a  
y  
,  
J  
a  
n  
u  
a  
r  
y  
2  
9  
,  
2  
0  
2  
0  
a  
t  
6  
:  
3  
6  
A  
M  
T  
o**

:  
C  
l  
i  
f  
f  
L  
a  
n  
e  
<

(b)(6)

>  
C  
c  
:  
L  
o  
r  
r  
i  
D  
o  
d  
d  
<

(b)(6)

(b)(6)

(b)(6)

,  
L  
i  
s  
a  
H  
e  
n  
s  
l  
e  
y  
<

(b)(6)

>  
,  
T  
r  
e  
a  
C  
a  
r  
v  
e  
r  
<



(b)(6)

S  
u  
b  
j  
e  
c  
t  
:  
R  
e  
:  
4  
L  
s  
  
I  
c  
a  
n  
m  
a  
k  
e  
t  
h  
a  
t  
w  
o  
r

k  
.  
L  
a  
u  
r  
a

O  
n  
J  
a  
n  
2  
9  
,  
2  
0  
2  
0  
,  
a  
t  
6  
:  
3  
1  
A  
M  
,  
L  
a  
n  
e  
,  
C  
l  
i  
f  
f  
(  
N  
I  
H  
/  
N  
I  
A  
I  
D

)  
[  
E  
]  
<

(b)(6)

>

w  
r  
o  
t  
e  
:

C  
o  
u  
l  
d  
3  
w  
o  
r  
k  
?

I  
w  
i  
l  
l  
(  
h  
o  
p

e  
f  
u  
l  
l  
y  
)  
b  
e  
d  
r  
i  
v  
i  
n  
g  
f  
r  
o  
m  
t  
h  
e  
a  
i  
r  
p  
o  
r  
t  
t  
o  
F  
t  
. D  
e  
t  
r  
i  
c  
k  
.

O  
n  
J  
a  
n  
2  
9

,  
2  
0  
2  
0  
,  
a  
t  
1  
2  
:  
2  
0  
P  
M  
,  
D  
o  
d  
d  
,  
L  
o  
r  
i  
(  
N  
I  
H  
/  
N  
I  
A  
I  
D  
)  
[  
E  
]  
<

(b)(6)

(b)(6)

w  
r  
o  
t  
e  
:

C  
l  
i  
f  
f  
-  
I  
h  
a  
v  
e  
a  
c  
o  
m  
m  
i  
t  
m  
e  
n  
t  
f  
r  
o  
m  
5  
-  
7  
t  
o  
n  
i  
g  
h  
t  
.  
I

c  
a  
n  
e  
a  
s  
i  
l  
y  
d  
o  
b  
e  
f  
o  
r  
e  
o  
r  
a  
f  
t  
e  
r  
7  
.

l  
f  
u  
r  
g  
e  
n  
t  
,  
l  
c  
a  
n  
b  
r  
e  
a  
k  
a  
w  
a  
y  
d  
u  
r  
i

n  
g  
m  
y  
o  
t  
h  
e  
r  
m  
e  
e  
t  
i  
n  
g  
f  
o  
r  
3  
0  
m  
i  
n  
s  
o  
r  
s  
o  
.  
I  
c  
a  
n  
b  
e  
a  
v  
a  
i  
l  
a  
b  
l  
e  
t  
o  
m  
o  
r  
r  
o  
w



a  
s  
e  
a  
r  
l  
y  
a  
s  
n  
e  
e  
d  
e  
d  
b  
y  
p  
h  
o  
n  
e  
.

L  
o  
r  
i

**F**  
r  
o  
m  
:  
L  
a  
n  
e  
,  
C  
l  
i  
f  
f  
(  
N  
I  
H  
/  
N  
I  
A

I  
D  
)  
[  
E  
]  
<

(b)(6)

S  
e  
n  
t  
:  
W  
e  
d  
n  
e  
s  
d  
a  
y  
,  
J  
a  
n  
u  
a  
r  
y  
2  
9  
,  
2

0  
2  
0  
5  
:  
4  
1  
:  
5  
7  
A  
M  
T  
o  
:  
H  
i  
g  
g  
s  
,  
E  
l  
i  
z  
a  
b  
e  
t  
h  
(  
N  
I  
H  
/  
N  
I  
A  
I  
D  
)  
[  
E  
]  
<

(b)(6)

(b)(6)

; D  
o  
d  
d  
, L  
o  
r  
i  
( N  
I  
H  
/  
N  
I  
A  
I  
D  
)  
[ E  
]  
<

(b)(6)

(b)(6)



,  
H  
e  
n  
s  
l  
e  
y  
,  
L  
i  
s  
a  
(  
N  
I  
H  
/  
N  
I  
A  
I  
D  
)  
[  
E  
]  
<

(b)(6)



>  
;  
M  
c  
N  
a  
Y  
,  
L  
a  
u  
r  
a  
(  
N  
I  
H  
/  
N  
I  
A  
I  
D  
)  
[  
E  
]  
<

(b)(6)

>  
C  
c  
:  
C

a  
r  
v  
e  
r  
,  
T  
r  
e  
a  
(  
N  
I  
H  
)  
[  
C  
]  
<

(b)(6)

>  
S  
u  
b  
j  
e  
c  
t  
:  
4  
L  
S  
  
L  
o

r  
i  
,  
L  
i  
b  
b  
y  
,  
L  
i  
s  
a  
a  
n  
d  
L  
a  
u  
r  
a  
,  
I  
s  
t  
h  
e  
r  
e  
a  
n  
y  
c  
h  
a  
n  
c  
e  
w  
e  
c  
o  
u  
l  
d  
h  
a  
v  
e  
a  
c  
a



I  
l  
a  
r  
o  
u  
n  
d  
5  
:  
3  
0  
P  
M  
t  
o  
d  
a  
y  
t  
o  
d  
i  
s  
c  
u  
s  
s  
t  
h  
e  
P  
a  
l  
m  
2  
s  
t  
u  
d  
y  
i  
n  
f  
o  
r  
m  
e  
d  
b  
y  
m  
y

r  
e  
c  
e  
n  
t  
v  
i  
s  
i  
t  
t  
o  
t  
h  
e  
D  
R  
C  
a  
s  
w  
e  
l  
l  
a  
s  
t  
h  
e  
r  
e  
a  
l  
i  
t  
i  
e  
s  
a  
s  
s  
o  
c  
i  
a  
t  
e  
d  
w  
i  
t  
h

t  
h  
e  
c  
o  
r  
o  
n  
a  
v  
i  
r  
u  
s  
o  
u  
t  
b  
r  
e  
a  
k  
?

T  
h  
a  
n  
k  
s  
,

C  
l  
i  
f  
f

---

**From:** Lane, Cliff (NIH/NIAID) [E] [/O=EXCHANGELABS/OU=EXCHANGE ADMINISTRATIVE GROUP (FYDIBOHF23SPDLT)/CN=RECIPIENTS/CN=2D7E368A3137473BBCE161547A82F2DE-CLANE]  
**Sent:** 1/27/2020 5:14:22 AM  
**To:** (b)(6)  
**Subject:** Fwd: Confirmed California (Los Angeles and Orange County) Cases of 2019 Novel Coronavirus (2019-nCoV)

Communications from a US university in a city with several cases (none at the university).

Begin forwarded message:

**From:** USC Student Health <[studenthealthinfo@usc.edu](mailto:studenthealthinfo@usc.edu)>  
**Date:** January 27, 2020 at 1:45:18 AM GMT+2  
**To:** Henry Lane (b)(6)  
**Subject:** Confirmed California (Los Angeles and Orange County) Cases of 2019 Novel Coronavirus (2019-nCoV)  
**Reply-To:** [studenthealth@usc.edu](mailto:studenthealth@usc.edu)

Dear Parents and Family Members,

I write to share the message below, which was recently sent to our campus community. As noted below, USC continues to actively monitor the developments related to the newly detected 2019 Novel Coronavirus. Although there have been two confirmed cases in LA and Orange County, neither has been connected to USC. We will remain in contact with you to keep you updated on any new developments.

If you have any questions, please feel free to call: 213-740-6291 or email: [studenthealth@usc.edu](mailto:studenthealth@usc.edu).

Thank you.

Sarah Van Orman, M.D., MMM, FACHA  
Chief Health Officer  
Associate Vice Provost for Student Health  
Clinical Professor of Family Medicine

**To:** USC Community

**From:** Sarah Van Orman, Chief Health Officer for USC Student Health

CLAN0000009441

**Date:** January 26, 2020

**Subject:** Confirmed California (Los Angeles and Orange County) Cases of 2019 Novel Coronavirus (2019-nCoV)

We are updating the community in light of information that individuals in Los Angeles and Orange County in Southern California have tested positive with the 2019 Novel Coronavirus (2019-nCoV). We are in contact with local public health officials; there is no known connection between the affected individuals and USC.

Local public health officials, under the guidance of the Centers for Disease Control and Prevention (CDC), will conduct a “contact tracing” measure with the identified patients, and proactively contact any individuals who might have had an exposure. They will work with any individuals who may be affected to check if any symptoms develop.

USC Student Health (part of Keck Medicine of USC) advises persons who recently traveled from Wuhan City or other affected areas in the past 14 days or have had close contact with someone suspected of having an infection with the 2019 novel coronavirus to watch for flu-like symptoms (fever and respiratory symptoms such as sore throat, cough, or difficulty breathing); and if experiencing symptoms, use a face mask and seek immediate medical care. Please call your health care provider in advance. If you are asymptomatic (not experiencing symptoms) you do not have to be seen by a provider.

**Students** should call USC Student Health for medical care, 213-740-9355 (WELL). Counseling is available at the same number, for students experiencing increased anxiety or stress related to concerns about family in China. **Faculty and staff** should contact their healthcare provider if they have symptoms, and the Center for Work and Family Life (213-821-8100) for counseling support. Additional updates will be shared with the community via email and the USC homepage: <https://usc.edu>.

**For general questions or comments: call 213-740-6291 or email [studenthealth@usc.edu](mailto:studenthealth@usc.edu).**

**2019 Novel Coronavirus (2019-nCoV)**

Questions from students; answers from USC Student Health

Updated 1/26/2020

**For Patients of USC Student Health: 213-740-9355 (WELL)**

**For general questions or comments: call 213-740-6291 or email [studenthealth@usc.edu](mailto:studenthealth@usc.edu).  
For Continual Updates: <https://usc.edu>**

## **KEY FACTS ABOUT THE CONFIRMED CASES:**

Individuals in Orange County and Los Angeles County, California have been confirmed as testing positive with the 2019 Novel Coronavirus (2019-nCoV) from the Orange County Health Care Agency and Los Angeles County Public Health. The following information is also confirmed:

- There is no evidence that person-to-person transmission has occurred from these cases.
- There is no known connection from affected individuals with USC.
- USC is in regular contact with our local public health officials and will update the community with any new developments.

**Answers to frequently asked questions are below; additional helpful information is available at the CDC FAQ website (<https://www.cdc.gov/coronavirus/2019-ncov/faq.html>).**

### **How can I know if I might have been in contact with an affected patient?**

Local public officials will conduct a “contact tracing” measure with identified patients and proactively contact any individuals who might have had an exposure. They will work with any individuals who may be affected to monitor if any symptoms develop.

### **What disinfection measures are effective?**

Coronaviruses, including the 2019 Novel Coronavirus, are transmitted through respiratory droplets from an infected person (cough, sneezing, close contact). Standard Environmental Protection Agency (EPA)-approved cleaning products and disinfectants are effective in cleaning surfaces.

The university is taking extended measures to ensure a hygienic environment, including regular cleaning of common areas, and refilling of soap and hand sanitizers.

### **What should I do to prevent the spread of infection?**

Flu and other serious respiratory illnesses are commonly spread by cough, sneezing, or unclean hands. Covering your nose and mouth when coughing or sneezing prevents the spread of a virus. Handwashing (with soap and water) for 20 seconds reduces risk of infection. (<https://www.cdc.gov/handwashing/videos.html>) **Avoid touching your eyes, nose, and mouth.** Avoid close contact with someone who is sick.

### **How many cases are there in LA? How fast is it spreading?**

Please visit the USC homepage (<https://usc.edu>) for continual updates on the 2019 Novel Coronavirus as it relates to the USC campus community. We expect to see more confirmed U.S. cases in addition to these first confirmed cases as screenings at airport points of entry in San Francisco, Los Angeles, New York, Chicago, and Atlanta continue to screen passengers traveling from Wuhan, Hubei province in China.

### **What measures is USC taking to prevent the spread of the 2019 Novel Coronavirus?**

All of us can take measures to protect our community from the spread of illness, primarily through good hand hygiene, covering coughs and sneezes, and reducing contact with others when feeling sick.

### **If someone who has recently traveled to Wuhan City is on campus, should they be isolated or held in quarantine?**

Any recent traveler from Wuhan or other affected area who has symptoms (fever and respiratory symptoms such as sore throat, cough, or difficulty breathing) should contact Student Health (213-740-9355) and make arrangements to be seen by a medical provider right away. The patient should wear a mask to prevent infection of others through respiratory droplets.

Quarantine is not currently recommended for asymptomatic individuals; monitoring their health and face/hand hygiene are the medically recommended practices. Individuals who may have had an exposure or are arriving from affected areas are not required to be quarantined. They are able to continue normal activities while closely monitoring their health.

The Los Angeles County Department of Public Health said in a statement that it appears this latest case does not threaten public health, cautioning, "people should not be excluded from activities based on their race, country of origin, or recent travel if they do not have symptoms of respiratory illness."

### **If there is an infection of the 2019 Novel Coronavirus on campus, will the university isolate the individual?**

In the event of a USC student testing positive for the 2019 Novel Coronavirus, the patient would receive appropriate medical attention and would be under monitoring of public health officials. Any roommates or suitemates concerned about close contact would be assisted in temporary relocation and any other needed support by the university.

### **What are the symptoms I should be looking for? Who is most at risk?**

Patients with confirmed 2019 Novel Coronavirus (2019-nCoV) infection have reportedly had mild to severe respiratory illness with symptoms of:

- Fever
- Cough
- Shortness of breath

Many cases appear to be mild. Individuals who are elderly, have weakened immune systems, or have other underlying health conditions appear to be at risk for more severe disease.

### **I am worried about friends and family in affected areas. What can I do to help?**

It's hard knowing people you care about are in the middle of a very scary situation far away. We know that this has been a difficult time for many members of our Trojan family. Please know we are here for you and encourage you to reach out for support. If you want to meet with a counselor, please call 213-740-9355, or you can join with other international students at a special “Let’s Talk” group in the OIS office, Tuesdays, 1:30-2:30.

You can also help your family back home by letting them know you are taking good care of yourself. The best advice for not getting sick is to practice frequent handwashing and staying out of close contact with people who might be sick. Let them know you are well, and it may comfort and reassure them. As opportunities to assist become available, we will share these with the community.

### **Does the flu shot prevent the 2019 Novel Coronavirus?**

No, the flu shot is formulated to match influenza viruses expected to be circulating in the United States during the 2019-2020 flu season (Los Angeles County is currently seeing a rising number of cases, so please get a flu shot if you have not already done so). The influenza virus is a different genetic makeup from the coronavirus. The coronavirus has many genetic variants, including the “common cold” that generally does not present serious adverse health risks.

### **Will the school be able to distribute face masks to students? What kinds of masks will be able to prevent the infection?**

Patients to Keck Medicine of USC ambulatory care settings, including USC Student Health buildings, are welcome to take a mask from the front lobby as they come in for care. If you do not have access to a mask, any face covering—including a tissue, cotton cloth, or scarf—can help reduce the spread of infections by physically keeping droplets from reaching others. A covering also prevents the casual “habit” of touching your mouth and nose with your hands that many people do without being aware of it.

### **Does wearing a face mask help me if I am NOT sick?**

Wearing face masks routinely is not recommended for people who are not sick. Face masks are effective in preventing droplets from a sick person from infecting others and are used by healthcare providers, family members, and others when caring for or in close contact with a sick person. Handwashing and avoiding



touching your face, (eyes, nose, and mouth) are the most effective method of illness prevention.

**Will the school be able to distribute hand sanitizer to students?**

Hand gel is available in dispensers at locations throughout the campuses and all members of the community are encouraged to use them. Remember that hand gel does not replace handwashing with soap and water; handwashing is a more effective way to reduce the spread of infection.

**What should I do if I have a fever or have the symptoms of the flu? Do I need to be isolated?**

Individuals who have had recent travel within the last 14 days from affected regions and are experiencing symptoms are advised to make an appointment to see a medical provider. Students can call USC Student Health, 213-740-9355 (WELL); let the scheduler know you think you may have the 2019 Novel Coronavirus. Faculty and staff should contact their regular health care provider. For other illnesses, stay at home to avoid spreading the virus to others until you have been without a fever for 24 hours.

**What can I eat and what can't I eat?**

There are no dietary restrictions related to viral infections.

**Where can I get the most updated information regarding the 2019 Novel Coronavirus?**

The most updated current information on the 2019 Novel Coronavirus as it presents in the United States will come from the federal public health agency, the Centers for Disease Control and Prevention: <https://www.cdc.gov/coronavirus/2019-ncov/index.html>. Any specific local advisories for California or Los Angeles County would be issued by the state and/or county public health agencies and will be shared with the university community by USC Student Health via email and on Twitter.

[Unsubscribe](#)

---

**From:** Lane, Cliff (NIH/NIAID) [E] [/O=EXCHANGELABS/OU=EXCHANGE ADMINISTRATIVE GROUP (FYDIBOHF23SPDLT)/CN=RECIPIENTS/CN=2D7E368A3137473BBCE161547A82F2DE-CLANE]  
**Sent:** 1/25/2020 1:33:58 AM  
**To:** Schmaljohn, Connie (NIH/NIAID) [E] [/o=ExchangeLabs/ou=Exchange Administrative Group (FYDIBOHF23SPDLT)/cn=Recipients/cn=721430c941df46339ecedefa47ac6dca-schmaljohn]; Marston, Hilary (NIH/NIAID) [E] [/o=ExchangeLabs/ou=Exchange Administrative Group (FYDIBOHF23SPDLT)/cn=Recipients/cn=ab30660917b942ffba9ae95d631116f3-marstonhd]  
**CC:** Hensley, Lisa (NIH/NIAID) [E] [/o=ExchangeLabs/ou=Exchange Administrative Group (FYDIBOHF23SPDLT)/cn=Recipients/cn=083ee40b073846fdabb00489a21d8247-hensleye]  
**Subject:** Re: WHO Consultation regarding the Wuhan coronavirus

Concur.

---

**From:** "Schmaljohn, Connie (NIH/NIAID) [E]" (b)(6)  
**Date:** Friday, January 24, 2020 at 2:27 PM  
**To:** Hilary Marston (b)(6) "Lane, Cliff (NIH/NIAID) [E]" (b)(6)  
**Cc:** Lisa Hensley (b)(6)  
**Subject:** RE: WHO Consultation regarding the Wuhan coronavirus

Thanks

---

**From:** Marston, Hilary (NIH/NIAID) [E] (b)(6)  
**Sent:** Friday, January 24, 2020 8:25 AM  
**To:** Schmaljohn, Connie (NIH/NIAID) [E] (b)(6); Lane, Cliff (NIH/NIAID) [E] (b)(6)  
**Cc:** Hensley, Lisa (NIH/NIAID) [E] (b)(6)  
**Subject:** RE: WHO Consultation regarding the Wuhan coronavirus

I'm certainly supportive.

---

**From:** Schmaljohn, Connie (NIH/NIAID) [E] (b)(6)  
**Sent:** Friday, January 24, 2020 8:21 AM  
**To:** Marston, Hilary (NIH/NIAID) [E] (b)(6); Lane, Cliff (NIH/NIAID) [E] (b)(6)  
**Cc:** Hensley, Lisa (NIH/NIAID) [E] (b)(6)  
**Subject:** RE: WHO Consultation regarding the Wuhan coronavirus

Hilary and Cliff,

I was also invited and am a member of the CEPI SAC. Is it OK with both of you if Lisa and I participate in this?

Connie

Connie Schmaljohn, Ph.D.

Director

NIAID Integrated Research Facility

Phone: (b)(6)

E-Mail: (b)(6)

CLAN0000009442

**From:** Hensley, Lisa (NIH/NIAID) [E] (b)(6)  
**Sent:** Thursday, January 23, 2020 4:54 PM  
**To:** Schmaljohn, Connie (NIH/NIAID) [E] (b)(6); Marston, Hilary (NIH/NIAID) [E] (b)(6)  
**Cc:** Lane, Cliff (NIH/NIAID) [E] (b)(6)  
**Subject:** FW: WHO Consultation regarding the Wuhan coronavirus

Connie and Hilary

Please see the request from Bill for the participation in the WHO roadmap.

Lisa

---

**From:** William Dowling (b)(6)  
**Sent:** Thursday, January 23, 2020 4:40 PM  
**To:** Carolyn Clark (b)(6); Florence, Clint (NIH/NIAID) [E] (b)(6); Wolfram, Larry (NIH/NIAID) [E] (b)(6); Raul Gomez Roman (b)(6); Carroll, Miles (b)(6); Graham, Barney (NIH/VRC) [E] (b)(6); Schmaljohn, Connie (NIH/NIAID) [E] (b)(6); Holbrook, Michael (NIH/NIAID) [C] (b)(6); Hensley, Lisa (NIH/NIAID) [E] (b)(6); Baric, Ralph (b)(6); Munster, Vincent (NIH/NIAID) [E] (b)(6); Vasan, Vasan (H&B, Geelong AAHL) (b)(6); (b)(6); (b)(6); Damon, Inger K. (CDC/DDID/NCEZID/DHCPP) (b)(6); (b)(6); Kayvon Modjarrad (b)(6)  
**Cc:** HENAO RESTREPO, Ana Maria (b)(6); GSELL, Pierre (b)(6); COSTA, Alejandro Javier (b)(6); RIVEROS BALTA, Alina Ximena (b)(6)  
**Subject:** WHO Consultation regarding the Wuhan coronavirus

Hello all,

On behalf of the WHO R&D Blueprint team, I am writing to request your participation on a call tomorrow at 9 PM Central European time (which will be Saturday morning for some of you). The purpose of the call is to lend your expertise to coordination of WHO response efforts. To that end, we would like to discuss the current status of efforts to culture the Wuhan coronavirus (or generate a recombinant virus); recent sequence data and modeling of the Spike protein; and potential next steps to assess cross reactivity with other coronaviruses. We realize that this is very short notice, but the situation is very dynamic. This would be an initial call with lengthier and more detailed calls in the near future.

Also, for those who have not seen them, I am attaching two reports on this topic that just came out and are highly relevant to the conversation.

Please let us know if you can make it. Call in details will be sent tomorrow.

Thank you,

Bill Dowling (seconded to WHO)

**William Dowling, PhD**  
Non-Clinical Vaccine Development Leader

CLAN000009442

(b)(6) (o)  
(b)(6) (m)

(b)(6)

1901 Pennsylvania Ave, NW, Suite 1003, Washington, DC 20006 USA

---

[www.cepi.net](http://www.cepi.net)



This e-mail and any attachments may contain confidential and/or privileged information.  
If you are not the intended recipient or have received this e-mail in error, please notify the sender immediately and destroy this e-mail. Any unauthorized copying, disclosure or distribution of the material in this e-mail is strictly prohibited.

---

**From:** Lane, Cliff (NIH/NIAID) [E] [/O=EXCHANGELABS/OU=EXCHANGE ADMINISTRATIVE GROUP (FYDIBOHF23SPDLT)/CN=RECIPIENTS/CN=2D7E368A3137473BBCE161547A82F2DE-CLANE]  
**Sent:** 1/21/2020 8:16:29 PM  
**To:** Higgs, Elizabeth (NIH/NIAID) [E] [/o=ExchangeLabs/ou=Exchange Administrative Group (FYDIBOHF23SPDLT)/cn=Recipients/cn=0601ca55a82841aba16353b96cff8ca9-ehiggs]  
**Subject:** Re: [Novel coronavirus | R&D Blueprint WG on clinical trials] - next TC Thursday 23 January. 4.30pm Geneva Time.

Thanks

On Jan 21, 2020, at 2:23 PM, Higgs, Elizabeth (NIH/NIAID) [E] [redacted] wrote:

Cliff,  
FYI on the nCoV.

Elizabeth S. Higgs, MD, DTMH, MIA  
Global Health Science Advisor  
Division of Clinical Research  
National Institute of Allergy and Infectious Diseases  
NIH, HHS, USG

[redacted]  
Skype: [redacted]  
Cell: [redacted]

---

**From:** "GSELL, Pierre" [redacted]  
**Date:** Monday, January 20, 2020 at 4:53 AM  
**To:** [redacted]  
**Subject:** FW: [Novel coronavirus | R&D Blueprint WG on clinical trials] - next TC Thursday 23 January. 4.30pm Geneva Time.

And please also find attached the NFR of the TC this group had on Wednesday 15 January 2020.  
Kind regards  
Pierre

---

**From:** GSELL, Pierre  
**Sent:** 17 January 2020 11:13  
**To:** GSELL, Pierre [redacted]  
**Subject:** RE: [Novel coronavirus | R&D Blueprint WG on clinical trials] - next TC Thursday 23 January. 4.30pm Geneva Time.

Dear All,

Thanks for your participation to the call on Wednesday. **Please mark your calendar for the next call – Thursday 23 January, 4.30 pm Geneva time.**

Please also find below additional information from the nCoV clinical management call that took place yesterday.

Kind regards  
Pierre

-----

Page 147 of 162

Withheld pursuant to exemption

(b)(5)

of the Freedom of Information and Privacy Act

(b)(5)

warm regards,

Janet

---

**From:** GSELL, Pierre

**Sent:** 14 January 2020 17:17

**To:** GSELL, Pierre (b)(6)

**Subject:** RE: [Novel coronavirus] - TC tomorrow Wednesday 15 January. 4.30pm Geneva Time.

Dear All,

We would like to invite you to a TC to discuss potential adjustments to the vaccine and treatment trial design for MERS-CoV, so that they can be used as generic guidance for coronaviruses.

FYI – please find hereafter the latest situation update in China - <https://www.who.int/csr/don/12-january-2020-novel-coronavirus-china/en/> and in Thailand - <https://www.who.int/news-room/detail/13-01-2020-who-statement-on-novel-coronavirus-in-thailand>

Please note that we have invited for the first time some international coronavirus experts in the hope that they can provide additional insights.

For ease of reference, please find hereafter the link to the meeting report of the MERS-CoV vaccine and treatment trial design - [https://www.who.int/docs/default-source/blue-print/mers-therapeutics-and-vaccines-workshop-2018.pdf?sfvrsn=ac9a5099\\_2](https://www.who.int/docs/default-source/blue-print/mers-therapeutics-and-vaccines-workshop-2018.pdf?sfvrsn=ac9a5099_2)

The TC is planned tomorrow Wednesday 15 January 2020. 4.30pm Geneva time.

Dial-in details: (b)(6) Participant code: (b)(6)

Kind regards

Pierre on behalf of the Blueprint team

<15\_01\_2020\_NFR\_BP WG Clinical Trials\_nCoV.DOCX>

CLAN0000009443

---

**From:** Lane, Cliff (NIH/NIAID) [E] [/O=EXCHANGELABS/OU=EXCHANGE ADMINISTRATIVE GROUP (FYDIBOHF23SPDLT)/CN=RECIPIENTS/CN=2D7E368A3137473BBCE161547A82F2DE-CLANE]  
**Sent:** 1/25/2020 1:37:05 AM  
**To:** Schmaljohn, Connie (NIH/NIAID) [E] [/o=ExchangeLabs/ou=Exchange Administrative Group (FYDIBOHF23SPDLT)/cn=Recipients/cn=721430c941df46339ecedefa47ac6dca-schmaljohnc]  
**Subject:** Re: WHO Consultation regarding the Wuhan coronavirus

Connie,

Please be sure we have your participation on the CEPI SAC codified as approved official duties.

Cliff

---

**From:** "Schmaljohn, Connie (NIH/NIAID) [E]" (b)(6)

**Date:** Friday, January 24, 2020 at 2:27 PM

**To:** Hilary Marston (b)(6), "Lane, Cliff (NIH/NIAID) [E]" (b)(6)

**Cc:** Lisa Hensley (b)(6)

**Subject:** RE: WHO Consultation regarding the Wuhan coronavirus

Thanks

---

**From:** Marston, Hilary (NIH/NIAID) [E] (b)(6)

**Sent:** Friday, January 24, 2020 8:25 AM

**To:** Schmaljohn, Connie (NIH/NIAID) [E] (b)(6); Lane, Cliff (NIH/NIAID) [E]

(b)(6)

**Cc:** Hensley, Lisa (NIH/NIAID) [E] (b)(6)

**Subject:** RE: WHO Consultation regarding the Wuhan coronavirus

I'm certainly supportive.

---

**From:** Schmaljohn, Connie (NIH/NIAID) [E] (b)(6)

**Sent:** Friday, January 24, 2020 8:21 AM

**To:** Marston, Hilary (NIH/NIAID) [E] (b)(6) Lane, Cliff (NIH/NIAID) [E] (b)(6)

**Cc:** Hensley, Lisa (NIH/NIAID) [E] (b)(6)

**Subject:** RE: WHO Consultation regarding the Wuhan coronavirus

Hilary and Cliff,

I was also invited and am a member of the CEPI SAC. Is it OK with both of you if Lisa and I participate in this?

Connie

Connie Schmaljohn, Ph.D.

Director

NIAID Integrated Research Facility

Phone: (b)(6)

E-Mail: (b)(6)



---

**From:** Hensley, Lisa (NIH/NIAID) [E] (b)(6)  
**Sent:** Thursday, January 23, 2020 4:54 PM  
**To:** Schmaljohn, Connie (NIH/NIAID) [E] (b)(6); Marston, Hilary (NIH/NIAID) [E] (b)(6)  
**Cc:** Lane, Cliff (NIH/NIAID) [E] (b)(6)  
**Subject:** FW: WHO Consultation regarding the Wuhan coronavirus

Connie and Hilary

Please see the request from Bill for the participation in the WHO roadmap.

Lisa

---

**From:** William Dowling (b)(6)  
**Sent:** Thursday, January 23, 2020 4:40 PM  
**To:** Carolyn Clark (b)(6); Florence, Clint (NIH/NIAID) [E] (b)(6); Wolfram, Larry (NIH/NIAID) [E] (b)(6); Raul Gomez Roman (b)(6); Carroll, Miles (b)(6); Graham, Barney (NIH/VRC) [E] (b)(6); Schmaljohn, Connie (NIH/NIAID) [E] (b)(6); Holbrook, Michael (NIH/NIAID) [C] (b)(6); Hensley, Lisa (NIH/NIAID) [E] (b)(6); Baric, Ralph (b)(6); Munster, Vincent (NIH/NIAID) [E] (b)(6); Vasan, Vasan (H&B, Geelong AAHL) (b)(6); (b)(6); (b)(6); Damon, Inger K. (CDC/DDID/NCEZID/DHCPP) (b)(6); (b)(6); Kayvon Modjarrad (b)(6)  
**Cc:** HENAO RESTREPO, Ana Maria (b)(6); GSELL, Pierre (b)(6); COSTA, Alejandro Javier (b)(6); RIVEROS BALTA, Alina Ximena (b)(6)  
**Subject:** WHO Consultation regarding the Wuhan coronavirus

Hello all,

On behalf of the WHO R&D Blueprint team, I am writing to request your participation on a call tomorrow at 9 PM Central European time (which will be Saturday morning for some of you). The purpose of the call is to lend your expertise to coordination of WHO response efforts. To that end, we would like to discuss the current status of efforts to culture the Wuhan coronavirus (or generate a recombinant virus); recent sequence data and modeling of the Spike protein; and potential next steps to assess cross reactivity with other coronaviruses. We realize that this is very short notice, but the situation is very dynamic. This would be an initial call with lengthier and more detailed calls in the near future.

Also, for those who have not seen them, I am attaching two reports on this topic that just came out and are highly relevant to the conversation.

Please let us know if you can make it. Call in details will be sent tomorrow.

Thank you,

Bill Dowling (seconded to WHO)

William Dowling, PhD

CLAN000009444

Non-Clinical Vaccine Development Leader



---

(b)(6) (o)

(b)(6) (m)

(b)(6)

1901 Pennsylvania Ave, NW, Suite 1003, Washington, DC 20006 USA

---

[www.cepi.net](http://www.cepi.net)



This e-mail and any attachments may contain confidential and/or privileged information. If you are not the intended recipient or have received this e-mail in error, please notify the sender immediately and destroy this e-mail. Any unauthorized copying, disclosure or distribution of the material in this e-mail is strictly prohibited.

**From:** Lane, Cliff (NIH/NIAID) [E] [/O=EXCHANGELABS/OU=EXCHANGE ADMINISTRATIVE GROUP (FYDIBOHF23SPDLT)/CN=RECIPIENTS/CN=2D7E368A3137473BBCE161547A82F2DE-CLANE]  
**Sent:** 1/21/2020 10:17:45 PM  
**To:** Markovitz, David (b)(6)  
**Subject:** Re: Coronavirus

(b)(6)

I am not aware of anyone in the US with an isolate but guess that one will be reversed engineered soon (if one is not obtained from the Seattle case).

Cliff

> On Jan 21, 2020, at 4:56 PM, Markovitz, David (b)(6) wrote:

>  
> Hi Cliff,  
> Greetings and salutations! Our magical banana lectin has been affective against every coronavirus tested so far and we would love to test it against the new coronavirus, with my collaborator who is in Hong Kong. (unfortunately, the Chinese government has not been too willing to share isolates so far). Any idea how to get a hold of an isolate? Or someone who could test it here? We just had a paper in PNAS about the efficacy of the lectin against influenza so it seems to be something that can be given in vivo, as we have also published with Ebola.

>  
> On the personal front, (b)(6)

(b)(6) So, exciting times! All the best, David

>  
>  
> Sent from my iPhone  
> \*\*\*\*\*  
> Electronic Mail is not secure, may not be read every day, and should not be used for urgent or sensitive issues  
>

**From:** Lane, Cliff (NIH/NIAID) [E] [/O=EXCHANGELABS/OU=EXCHANGE ADMINISTRATIVE GROUP (FYDIBOHF23SPDLT)/CN=RECIPIENTS/CN=2D7E368A3137473BBCE161547A82F2DE-CLANE]  
**Sent:** 1/25/2020 12:49:18 AM  
**To:** Edward, Trina (NIH/NIAID) [E] [/o=ExchangeLabs/ou=Exchange Administrative Group (FYDIBOHF23SPDLT)/cn=Recipients/cn=9292421876c142708696e33c1bdf154c-edwardts]; Manion, Maura (NIH/NIAID) [E] [/o=ExchangeLabs/ou=Exchange Administrative Group (FYDIBOHF23SPDLT)/cn=Recipients/cn=bde55f09a88a4234bcc7931f2d7b8a88-manionma]  
**CC:** Montealegre, Gina (NIH/NIAID) [E] [/o=ExchangeLabs/ou=Exchange Administrative Group (FYDIBOHF23SPDLT)/cn=Recipients/cn=9363bda07f1d4f478960ef8b09363e5b-montealegre]; Davey, Richard (NIH/NIAID) [E] [/o=ExchangeLabs/ou=Exchange Administrative Group (FYDIBOHF23SPDLT)/cn=Recipients/cn=bd0281280f634cda9fd5b03fda958ba6-rdavey]  
**Subject:** Re: Young child admission to 1NW

Trina,

Thanks very much. Who was the Attending?

Cliff

---

**From:** Trina Edward (b)(6)  
**Date:** Friday, January 24, 2020 at 10:01 PM  
**To:** "Manion, Maura (NIH/NIAID) [E]" (b)(6) "Lane, Cliff (NIH/NIAID) [E]" (b)(6)  
**Cc:** "Montealegre, Gina (NIH/NIAID) [E]" (b)(6)  
**Subject:** RE: Young child admission to 1NW

Hi Dr. Lane, Maura and Gina,

(b)(5)

---

**From:** Manion, Maura (NIH/NIAID) [E] (b)(6)  
**Sent:** Thursday, January 23, 2020 5:51 PM  
**To:** Lane, Cliff (NIH/NIAID) [E] (b)(6)  
**Cc:** Montealegre, Gina (NIH/NIAID) [E] (b)(6) Edward, Trina (NIH/NIAID) [E] (b)(6)  
**Subject:** Re: Young child admission to 1NW

(b)(5)

Also to note, we talked about Latent vs active TB. They very much wanted to talk about the novel Coronavirus (I followed up with some information), and they would very much like to hear about the NIH experience with Ebola

--

---

**From:** Cliff Lane (b)(6)  
**Date:** Thursday, January 23, 2020 at 5:35 PM  
**To:** "Manion, Maura (NIH/NIAID) [E]" (b)(6)  
**Cc:** "Montealegre, Gina (NIH/NIAID) [E]" (b)(6)  
**Subject:** Fwd: Young child admission to 1NW

Maura,

(b)(5)

I am sorry I am not there.

Please let me know if there are any issues with the child or anything I can do to help.

Cliff

CLAN0000009446

Begin forwarded message:

**From:** "Merke, Deborah (NIH/CC/OD) [E]" <(b)(6)>

**Date:** January 23, 2020 at 8:45:35 PM GMT+1

**To:** "Lang, David (NIH/CC/OD) [E]" <(b)(6)> "Montealegre, Gina (NIH/NIAID) [E]"

<(b)(6)>

**Cc:** "Driscoll, Patricia (NIH/NIAID) [E]" <(b)(6)>, "Lane, Cliff (NIH/NIAID) [E]"

<(b)(6)>

**Subject:** RE: Young child admission to 1NW

David,

Thanks for contacting NIAID as we discussed.

Debbie

---

**From:** Lang, David (NIH/CC/OD) [E] <(b)(6)>

**Sent:** Thursday, January 23, 2020 1:51 PM

**To:** Montealegre, Gina (NIH/NIAID) [E] <(b)(6)>

**Cc:** Driscoll, Patricia (NIH/NIAID) [E] <(b)(6)>; Merke, Deborah (NIH/CC/OD) [E]

<(b)(6)>

**Subject:** Young child admission to 1NW

Hi, Gina. I wanted to be sure you are aware of an admission to 1NW of a patient <(b)(6)> and also to <(b)(5)>

<(b)(5)>

Thanks,

David

P.S. I cc'd Pat Driscoll for situational awareness since Outlook alerted me that Gina is away.

---

**From:** Lane, Cliff (NIH/NIAID) [E] [/O=EXCHANGELABS/OU=EXCHANGE ADMINISTRATIVE GROUP (FYDIBOHF23SPDLT)/CN=RECIPIENTS/CN=2D7E368A3137473BBCE161547A82F2DE-CLANE]  
**Sent:** 1/28/2020 4:26:26 PM  
**To:** McNay, Laura (NIH/NIAID) [E] [/o=ExchangeLabs/ou=Exchange Administrative Group (FYDIBOHF23SPDLT)/cn=Recipients/cn=d089e838a3824b60b91b6c394fedd335-lmcnay]  
**CC:** Grace, Beth (NIH/NIAID) [C] [/o=ExchangeLabs/ou=Exchange Administrative Group (FYDIBOHF23SPDLT)/cn=Recipients/cn=c75f1e9e678842258cf6472505f68cd8-bgrace]  
**Subject:** Re: CT imaging for CoronaVirus

One thought I had was (b)(5)

(b)(5)

(b)(5)

On Jan 28, 2020, at 6:11 PM, McNay, Laura (NIH/NIAID) [E] (b)(6) wrote:

fyi

---

**From:** "Johnson, Martin S. (NIH/NIAID) [E]" (b)(6)  
**Date:** Tuesday, January 28, 2020 at 11:05 AM  
**To:** "Feuerstein, Irwin (NIH/NIAID) [E]" (b)(6), "Schmaljohn, Connie (NIH/NIAID) [E]" (b)(6)  
**Cc:** Laura McNay (b)(6)  
**Subject:** RE: CT imaging for CoronaVirus

Thanks Irwin. Information appreciated.

We will let Laura know of any requests for budget data and let her consolidate information on DCR's behalf or her delegate as she assigns.

---

**From:** Feuerstein, Irwin (NIH/NIAID) [E] (b)(6)  
**Sent:** Tuesday, January 28, 2020 9:24 AM  
**To:** Schmaljohn, Connie (NIH/NIAID) [E] (b)(6)  
**Cc:** McNay, Laura (NIH/NIAID) [E] (b)(6); Johnson, Martin S. (NIH/NIAID) [E] (b)(6)  
**Subject:** CT imaging for CoronaVirus

Hi. As you know, CT should be a very good way to follow pulmonary coronavirus infection. We should be able to do the imaging here if the model comes to IRF. Please see attached.  
Best, respectfully

Irwin M. Feuerstein, MD MBA MSHCA  
Director of Imaging Sciences  
Integrated Research Facility, Fort Detrick  
National Institute of Allergy and Infection Diseases  
National Institutes of Health

(b)(6)

(b)(6) (office direct)



---

**From:** Lane, Cliff (NIH/NIAID) [E] [/O=EXCHANGELABS/OU=EXCHANGE ADMINISTRATIVE GROUP (FYDIBOHF23SPDLT)/CN=RECIPIENTS/CN=2D7E368A3137473BBCE161547A82F2DE-CLANE]  
**Sent:** 1/29/2020 11:32:26 AM  
**To:** Higgs, Elizabeth (NIH/NIAID) [E] [/o=ExchangeLabs/ou=Exchange Administrative Group (FYDIBOHF23SPDLT)/cn=Recipients/cn=0601ca55a82841aba16353b96cff8ca9-ehiggs]  
**CC:** Dodd, Lori (NIH/NIAID) [E] [/o=ExchangeLabs/ou=Exchange Administrative Group (FYDIBOHF23SPDLT)/cn=Recipients/cn=a2964312396745bcbf1253d1787f5222-doddl]; Hensley, Lisa (NIH/NIAID) [E] [/o=ExchangeLabs/ou=Exchange Administrative Group (FYDIBOHF23SPDLT)/cn=Recipients/cn=083ee40b073846fdabb00489a21d8247-hensleyle]; McNay, Laura (NIH/NIAID) [E] [/o=ExchangeLabs/ou=Exchange Administrative Group (FYDIBOHF23SPDLT)/cn=Recipients/cn=d089e838a3824b60b91b6c394fedd335-lmcnay]; Carver, Trea (NIH) [C] [/o=ExchangeLabs/ou=Exchange Administrative Group (FYDIBOHF23SPDLT)/cn=Recipients/cn=ac05f976df484ed69022b8663cd448d3-carverkr]  
**Subject:** Re: 4Ls

Important - not necessarily urgent.

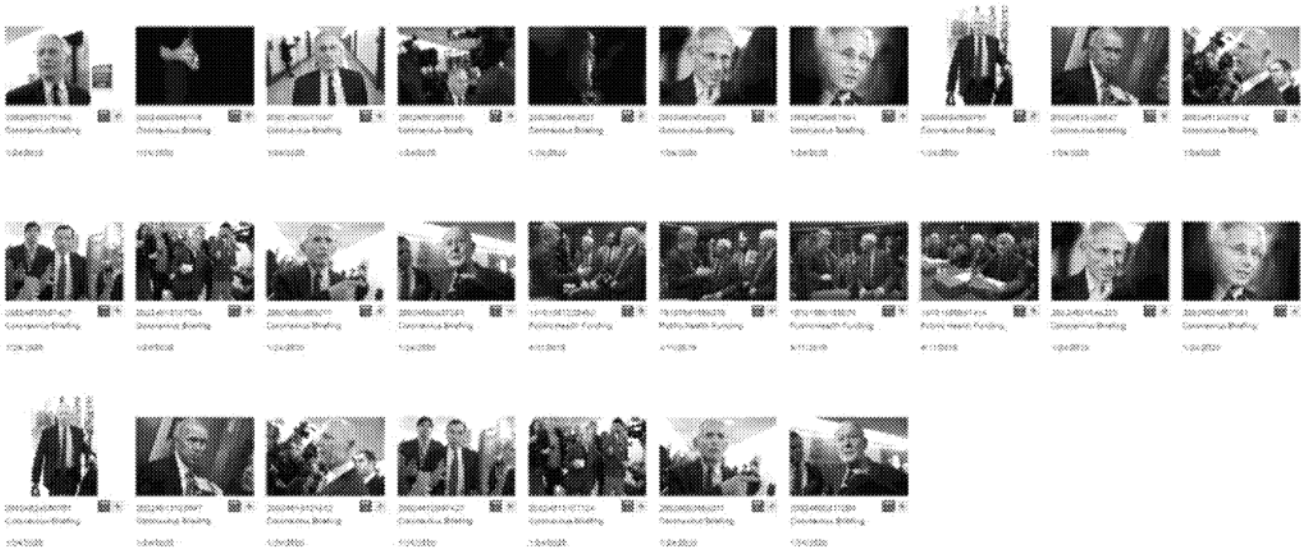
> On Jan 29, 2020, at 12:09 PM, Higgs, Elizabeth (NIH/NIAID) [E] (b)(6) wrote:

>  
> Cliff,  
> I'll be in the road but happy to speak.  
> Could do tomorrow in person not sure how urgent.  
> Libby  
>  
> Sent from my iPhone

>> On Jan 29, 2020, at 5:41 AM, Lane, Cliff (NIH/NIAID) [E] (b)(6) wrote:

>>  
>> Lori, Libby, Lisa and Laura,  
>>  
>> Is there any chance we could have a call around 5:30 PM today to discuss the Palm 2 study informed by my recent visit to the DRC as well as the realities associated with the coronavirus outbreak?  
>>  
>> Thanks,  
>>  
>> Cliff  
>>  
>>

**From:** Folkers, Greg (NIH/NIAID) [E] [/O=EXCHANGELABS/OU=EXCHANGE ADMINISTRATIVE GROUP (FYDIBOHF23SPDLT)/CN=RECIPIENTS/CN=614C792839A146B9A8F87A1378519DBD-GFOLKERS]  
**Sent:** 1/24/2020 9:19:50 PM  
**To:** NIAID OD AM [/o=ExchangeLabs/ou=Exchange Administrative Group (FYDIBOHF23SPDLT)/cn=Recipients/cn=8b9ef66c6c774c23bbe00d03479ce7c3-NIAID OD AM]; NIAID COGCORE [/o=ExchangeLabs/ou=Exchange Administrative Group (FYDIBOHF23SPDLT)/cn=Recipients/cn=b70a78249dbb49d28fa4c19f5de18c4d-NIAID COGCO]; NIAID OCGR Leg [/o=ExchangeLabs/ou=Exchange Administrative Group (FYDIBOHF23SPDLT)/cn=Recipients/cn=4a048ca325c54cdb832595236e710800-NIAID OCGR]  
**Subject:** photos from coronavirus briefing 1-24-2020 <http://bit.ly/2RQgXh8>



**Disclaimer:** Any third-party material in this email has been shared for internal use under fair use provisions of U.S. copyright law, without further verification of its accuracy/veracity. It does not necessarily represent my views nor those of NIAID, NIH, HHS, or the U.S. government.

---

**From:** Lane, Cliff (NIH/NIAID) [E] [/O=EXCHANGELABS/OU=EXCHANGE ADMINISTRATIVE GROUP (FYDIBOHF23SPDLT)/CN=RECIPIENTS/CN=2D7E368A3137473BBCE161547A82F2DE-CLANE]  
**Sent:** 1/31/2020 6:59:09 PM  
**Subject:** FW: GIH weekly publication review No.3 - 2020

---

**From:** David Heymann (b)(6)

Several reliable journalists have told me that China continues, after 27 January, to use pneumonia in the case definition – Nikki are you able to find out?

Thanks.

DLH

Thank you Myoung don for your valuable contribution! Nikki

**From:** (b)(6)

**Sent:** 30 January 2020 10:40

Dear all,

(b)(5)

Best wishes,

Oh Myoung-don, M.D.  
Professor,  
Department of Internal Medicine  
Seoul National University College of Medicine  
Seoul National University Hospital  
101 Daehak-ro, Jongno-gu, Seoul, 03080, South Korea  
TEL: (b)(6) FAX: 82-2-762-9662  
e-mail: (b)(6)

CLAN0000009471

보낸사람 : Johan Giesecke (b)(6)  
 받는사람 : David Heymann (b)(6), "오명돈" (b)(6), STAG IH Secretariat <stag-ih-secretariat@who.int>, (b)(6) "(SPmig) DELIA ENRIA"  
 (b)(6) "Delia Enria (b)(6)" (b)(6) "Dr Amadou Alpha SALL (Amadou.S"  
 (b)(6) Gary Kobinger <Gary.Kobinger@crchudequebec.ulaval.ca>, "(SPmig) Juliet Bedford"  
 (b)(6) (b)(6)" (b)(6)", "Lane Cliff (NIH/NIAID) [E"  
 (b)(6) "President\_RKI (b)(6)" "Schuchat Anne MD (CDC/OD) (ac"  
 (b)(6), Wieler Lothar (b)(6) Ziad Memish (b)(6)

받은날짜 : 2020-01-30 (목) 16:26:30

제목 : Re: GIH weekly publication review No.3 - 2020

Dear all,

(b)(5)

Thanks from me also, Myoung-don for sharing your manuscript.

Best,

Johan

Från: David Heymann (b)(6)

Datum: torsdag 30 januari 2020 04:41

Till: ""오명돈"" (b)(6) STAG IH Secretariat <stag-ih-secretariat@who.int>,  
 (b)(6), ""(SPmig) DELIA ENRIA""  
 (b)(6), ""Delia Enria (b)(6)"" <(b)(6)>, ""Dr Amadou  
 Alpha SALL (Amadou.S"" (b)(6) >, Gary Kobinger  
 (b)(6) >, Johan Giesecke (b)(6) ""(SPmig) Juliet  
 Bedford"" (b)(6) ""(b)(6)""  
 (b)(6) >, ""Lane Cliff (NIH/NIAID) [E"" (b)(6) ""President\_RKI  
 (b)(6) >, ""Schuchat Anne MD (CDC/OD) (ac"" (b)(6), Wieler  
 Lothar (b)(6) >, Ziad Memish (b)(6)

Ämne: Re: Re: GIH weekly publication review No.3 - 2020

(b)(5)

DLH

From: "오명돈" (b)(6)

Sent: Wednesday, January 29, 2020 5:34 pm

To: David Heymann; STAG IH Secretariat; (b)(6); "(SPmig) DELIA ENRIA"; "Delia Enria

(b)(6); "Dr Amadou Alpha SALL (Amadou.S"; Gary Kobinger; Johan Giesecke; "(SPmig) Juliet Bedford";

(b)(6); "Lane Cliff (NIH/NIAID) [E"; "President\_RKI (b)(6); "Schuchat Anne MD  
(CDC/OD) (ac"; Wieler Lothar; Ziad Memish

**Subject:** RE: Re: GIH weekly publication review No.3 - 2020

Dear David and all,

I'd like to share our experience from the first imported case into Korea. This is an excerpt from our case report (not published yet)

(b)(4)

Regards,

Oh Myoung-don, M.D.  
Professor,  
Department of Internal Medicine  
Seoul National University College of Medicine  
Seoul National University Hospital  
101 Daehak-ro, Jongno-gu, Seoul, 03080, South Korea  
TEL: (b)(6), FAX: 82-2-762-9662  
e-mail: (b)(6)

원본 파일

CLAN0000009471